

**ZBR** 无锡中博锐机械有限公司  
WUXI ZHONGBORUI MACHINERY CO., LTD  
TEL: 0510-66812720  
EMAIL: wuxizhongborui@163.com  
Website: www.silo-forming-machine.com



**无锡中博锐机械有限公司**  
WUXI ZHONGBORUI MACHINERY CO., LTD



## Business policy

Leading technology; High quality and efficiency;  
Customers first; Good faith compliance.

Wuxi Zhongborui Machinery Co., Ltd specialized in manufacturing all kinds of roll forming machines, such as water tank forming machine, silo bin forming machine, steel water making machine and so on.

Our company holds a professional team of skilled experts, managerial talents with modern management consciousness, meanwhile, we committed to the research and developing of new kinds of machines, which makes us becomes stronger and stronger, from a small factory only produce single glazed tile making machine to now we have manufactured many series of roll forming machines. Our products can meet all the steel structure building requirements. Our customers are covered all over the world and the machines are export to Australia, Southeast Asia, South Africa and other regions.



Our quality principle: everyone joins in, and manufacturing conforming machine products with reasonable cost. We always design the special coil process equipment as per customer's drawing or sample, trying our best to satisfy the customer.

After-sales service: our experts with rich experience will provide on-site commissioning.

We always keep our business principle in mind--"reliable quality" & "attentive service"

Sincerely wish to establish a long-run business relationship with friends both at home and abroad.

**ZBR**  
ZHONGBORUI MACHINERY  
**CATALOGUE**

1	Silo Bin Forming Machine .....	1-4
2	Water Tank Forming Machine .....	5-8
3	Steel Silo Making Machine .....	9-11
4	Steel Water Tank Making Machine .....	12-13
5	Corrugated Barrel Type Machine .....	14-15
6	Solar Bracket Roll Forming Machine.....	16-17
7	C-Z Purlin Roll Forming Machine.....	18-02

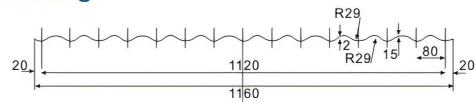


## GWC 15-80-1120 Silo Bin Forming Machine

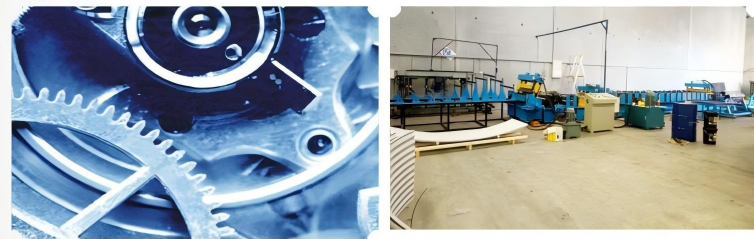
This production line realizes decoiling, roll-forming, punching, curving, cutting and stacking as an automatic producing process, requiring 1 worker.

Main Power:	15KW
Hydraulic power:	7.5kw
Roll Station:	24
Thickness:	1mm
Material of blade:	Cr12

### Profile Drawing



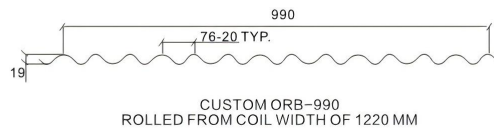
### Machine Picture



### GWC 19-76.2-1120 Water Tank Forming Machine

- The construction of roll-former: wall frame.
- Transmission way: motor-chain drive-chain-main shaft
- Roll-forming station: 18 stations
- Main power: 15KW 415V 50HZ 3-phase Brake Motor
- Main reducer: Cycloidal Pinwheel Reduction Box: 33-43-15KW.
- Material of rollers: qualified 45# steel, galvanization treatment, to increase the smooth of roller surface and make sure of its service time and also avoid surface damage of the sheet.
- The shape of rollers is designed through German design software COPRA, and processed on the precision NC machine. The surface of rollers is polished
- The diameter of shaft for rollers:  $\phi 85$ , 45# steel quenched and tempered.

### Profile Drawing



### Machine Picture

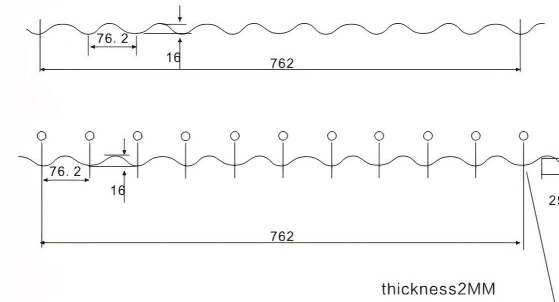




## Steel Silo Making Machine GWC 200-55-1000

Driven decoiler	Manual, 10tons, 1250mm, $\phi$ 500-620mm
Levelling & feeding	4 wheel guide, 2 roller for feeding, 5 roller for levelling, shaft $\phi$ 130mm, 40cr steel, surface HF quenching
Shearing	2mmx1250mmxL(can be set), gantry type, hydraulic drive
Hydraulic punch	Can punch all holes in drawing by NC, oil cylinder $\phi$ 200 (2pcs), $\phi$ 50(6pcs), SKD11 die steel, HRC58-62° heat treatment ball locking type of punch die, easy to change
Roll forming	Wallboard type structure (60mm thickness), entirety steel base, chain drive, 19 roller station main power: DLMAX brake motor, 15kw double reduction gear link device, use 450 TAILONG(Chinese famous brand) cylindrical gear roller material: GCr15 high carbon chromium bearing steel, HRC58-62° upper and lower shaft: $\phi$ 130mm, 40Cr steel, thermal refining, grinding and finish machining.
Curving	The angle of inclination can be adjusted as per the radius of curvature, driven by hydraulic oil cylinder Cr12 die steel, HRC58-62° heat treatment

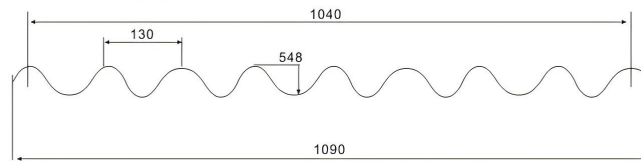
## Profile Drawing



## Steel Water Tank Making Machine GWC 54.8-130-1040

He construction of Roll-former:	Wall frame
Transmission way:	Motor-chain drive-chain -main shaft
Roll-forming station:	18 stations
Main power:	15KW 380V 50HZ 3-phase
Main reducer:	Cycloidal Pinwheel Reduction Box: 33-43-15KW.
Material of rollers:	GCr15 high-carbon chromium bearing steel, the hardness after heat treatment

### Profile Drawing



### Machine Picture



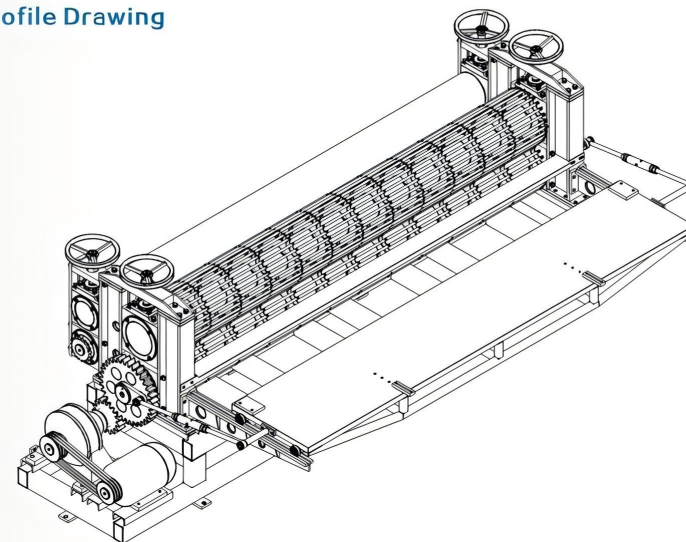


## Corrugated Barrel Type Machine

### TECHNICAL SPECIFICATIONS:

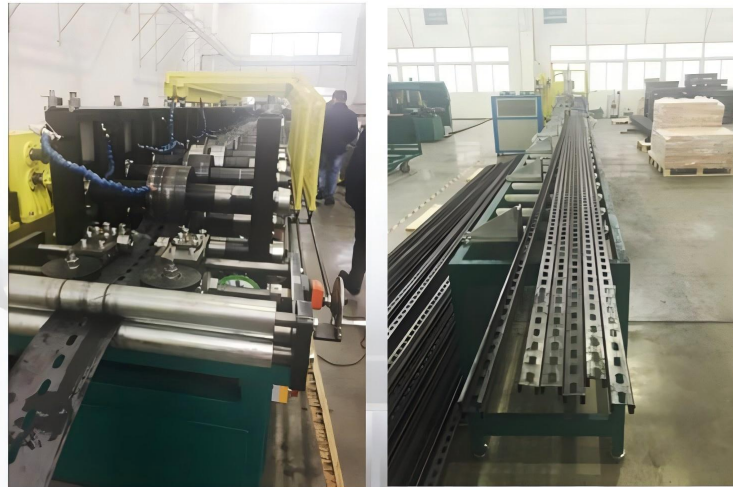
LENGTH OF THE SHEET:	2500mm/3000mm/3660mm/4267mm. MAX
WIDTH OF THE SHEET:	762/914/1000 MM. TO 1250 MM
THICKNESS RANGE OF SHEET:	0.15 MM TO 0.40 MM
MATERIAL TO BE CORRUGATED:	FULL HARD, SEMI-HARD, SOFT GALVANISED SHEETS, ALU-ZINC ALLOY & PPGI SHEET
DRIVE:	11 KW~15KW, 1440 RPMAC, FOR TYPE A 3 PHASE
O.D. OF CORRUGATION ROLLS:	380~390 MM
O.D. OF PINCH ROLLS:	260~270 MM.
SPEED:	12~15 STROKES PER MIN (CAN BE ADJUSTED BY PULLEY)
CORUGATION PARAMETERS:	AS PER 3316 TO JIS-SGCH □1987.
WT. OF THE MACHINE :	5.5 TONNES APPROX.
PRODUCTION CAPACITY:	24.30 SHEETS FROM 0.15 TO 0.20 MM & 12~15 SHEETS FROM 0.22 TO 0.63 MM PER MINUTE.
MACHINE SIZE:	3000*2015*1650mm (Up to the final product)

### Profile Drawing



## Solar Bracket Roll Forming Machine

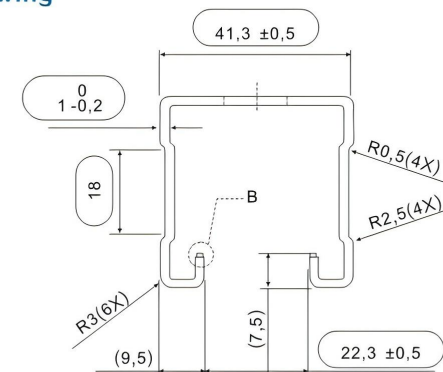
The application of the solar energy support system in the support of solar panels is much more than simple production and installation. Solar panels can also be moved according to the sun's rays and seasons. Just as in the first installation, the inclined plane of each solar panel can be fixed on the specified position by moving the fastener to adjust the bevel to meet the different angles of the light. The related products of the solar energy support system are carbon steel and stainless steel. The surface of the carbon steel is made of hot dip galvanized, and the outdoor use is not rusty for 30 years. Features: no welding, no drilling, 100% adjustable, 100% can be reused.



Solar Bracket/Photovoltaic Stents/Solar Panel Mounting Bracket roll forming machine is composed of de-coiler, leveler&servo feeder, continuously punching machine, roll forming, correction, cutting, collection table, electrical control system etc.

No	Part	Model and specific	Quantity	Remarks
1	Uncoiler	5T Automatic	1 set	5.5KW+3KW
2	Servo feeder & Straightener	With individual control system	1 set	5.5KW
3	Press machine	80T	1 set	YANGLI
4	Punching mould	SKD11		According to hole layout
5	Roll forming machine	Single station. By gearbox	1 set	22KW
6	Hydraulic cutter		1 set	5.5KW
7	Conveyor	Length: 3m	3 sets	
8	Controller	Whole machine PLC		
9	Spare part			

## Profile Drawing





## C-Z Purlin Roll Forming Machine

- Z and C adjustable purlin machine with hydraulic decoiler or manual decoiler.
- Price required for both decoilers
- C-80mm to 300mm and Z-120mm to 300 purlins adjustable roll forming machine post punching and post cutting.

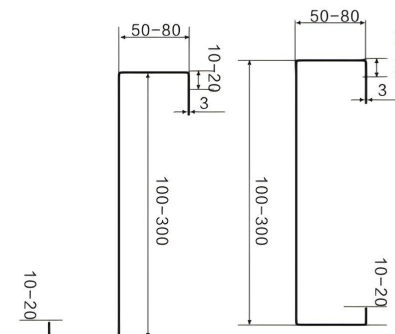
Machine consists of following parts

- Feeding and Leveling Device
- Rolling Forming System
- Hydraulic Punching & Cutting
- Product outcome support frame
- PLC Control System

When we change from c purlin to z purlin, y

- Main Motor Type: 3 Phases motor
- Main Motor Power: 15KW
- Speed of Forming : 10-15m/min
- Material of Roller: Gcr15
- 18 Groups Rollers
- Material of main shaft: 40Cr  
(The main shaft is grinded & heat treated followed by chrome plating)
- Diameter of Main Shaft: 70mm

## Profile Drawing



## Machine Picture



## Brand core value



Rom the point of view of long-term development think and discuss problems, for mutual benefit cooperation program, through the resource integration, complementary strengths, and symbiosis, to develop their potential and achieve resources of the optimal configuration, organization the best combination of talent, the best utilization, the maximum value realization, make interests associated all sides have satisfactory results.



## Business policy

Leading technology; High quality and efficiency;  
Customers first; Good faith compliance.







*Creation changes life products serve world*